



**GRAPHIC**  
AUSTRALIA

**Artwork Template**

**Item # G7101**

**J26 Standard Lighter**

**Create your own spec sample!**

This file can be used to create "cut and paste" mock-ups for a potential order. Simply print this page, remembering to print at 100% to ensure templates are actual size.

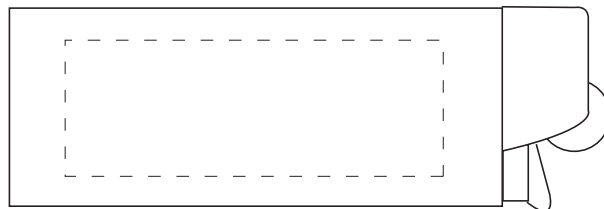
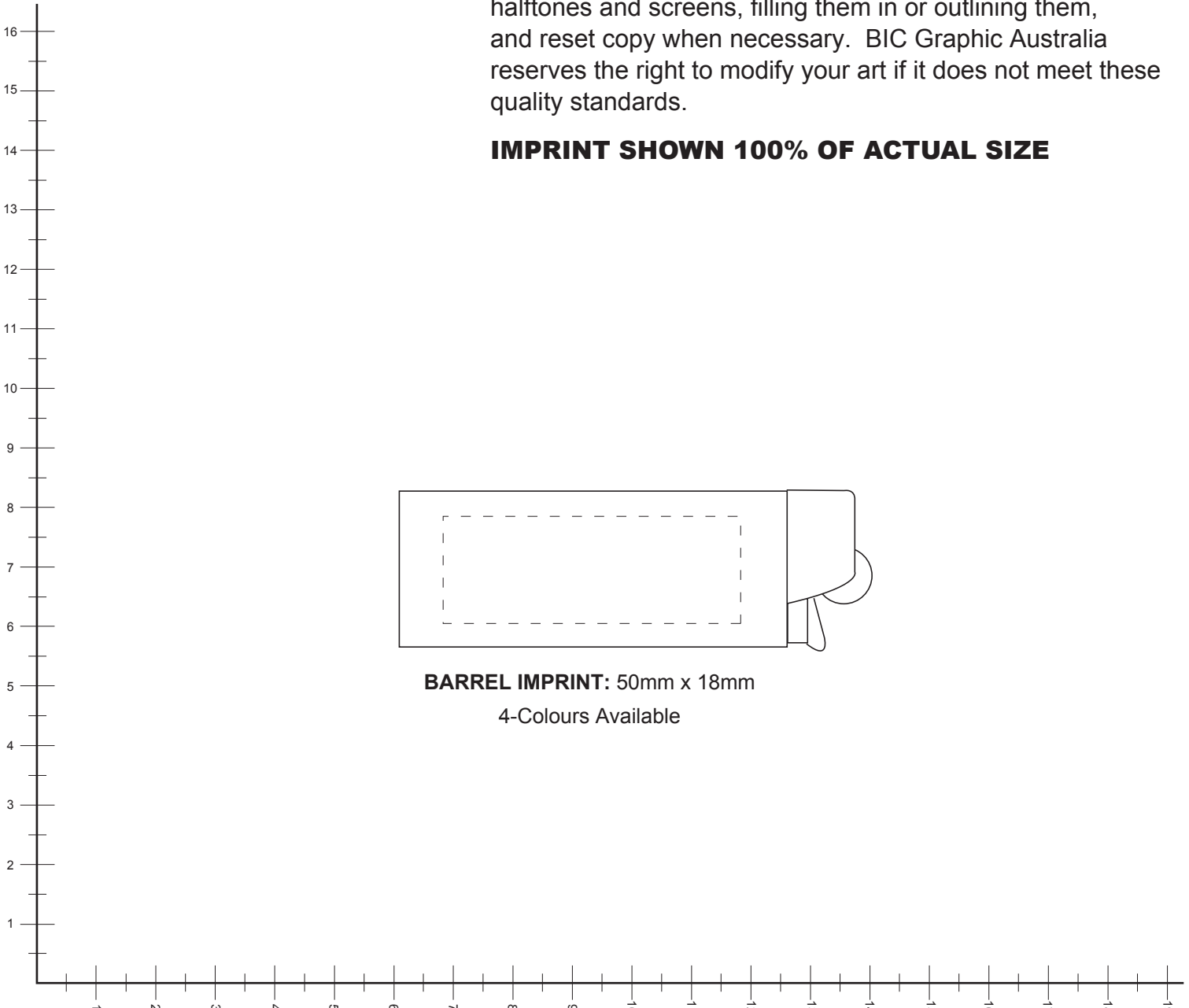
**Use this template to develop artwork for your BIC order!**

Simply download the template file and open in Adobe Illustrator to format your artwork.

**Artwork Standards**

In order to give you the highest quality imprint, we have developed some artwork guidelines, which include minimum line weights. All copy should be 6 points or larger. Lines should be no thinner than .5 pt. We will redraw halftones and screens, filling them in or outlining them, and reset copy when necessary. BIC Graphic Australia reserves the right to modify your art if it does not meet these quality standards.

**IMPRINT SHOWN 100% OF ACTUAL SIZE**



**BARREL IMPRINT: 50mm x 18mm**  
4-Colours Available